

**SecureAgent Software®**

Presents

**Secure Data Solution®**

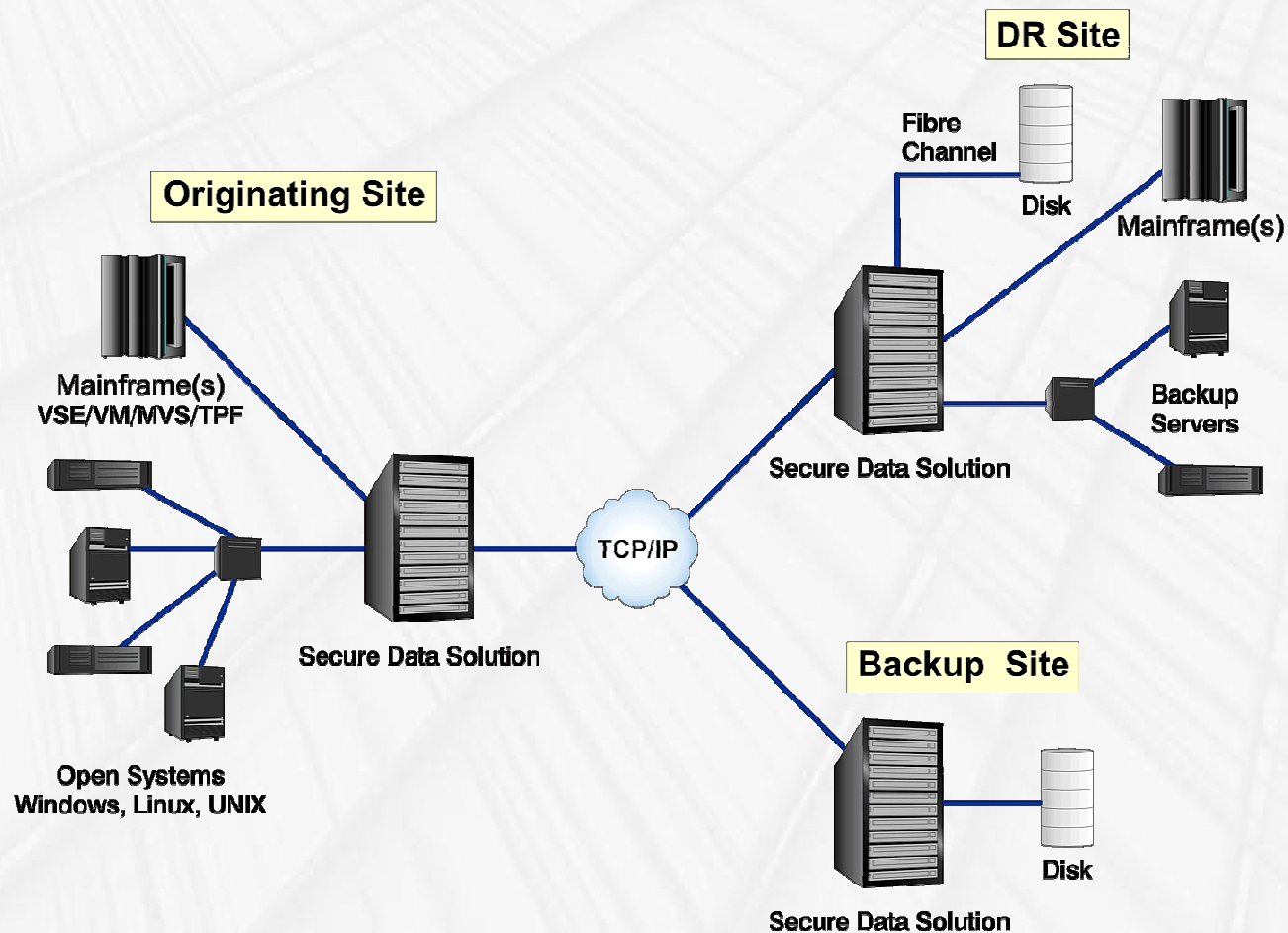
Presented by John Sawyer and Brad Rice

SecureAgent Software

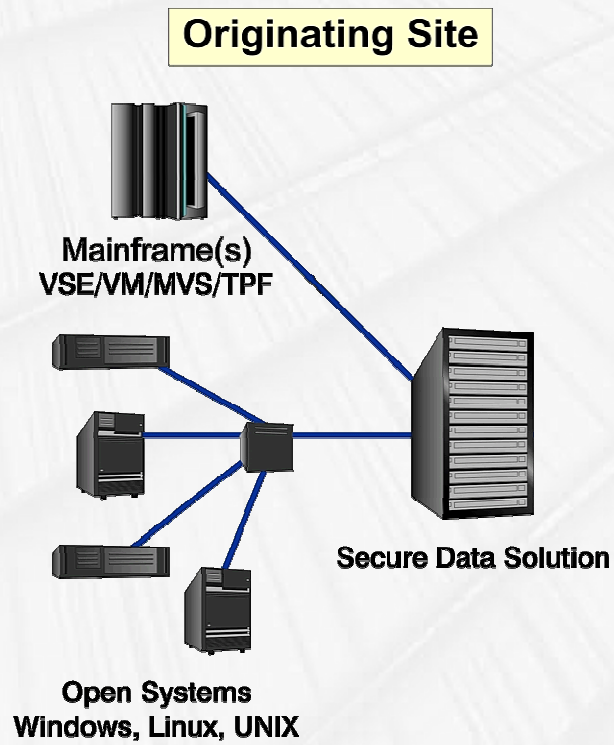
August 10<sup>th</sup>, 2011

# Secure Data Solution<sup>®</sup>

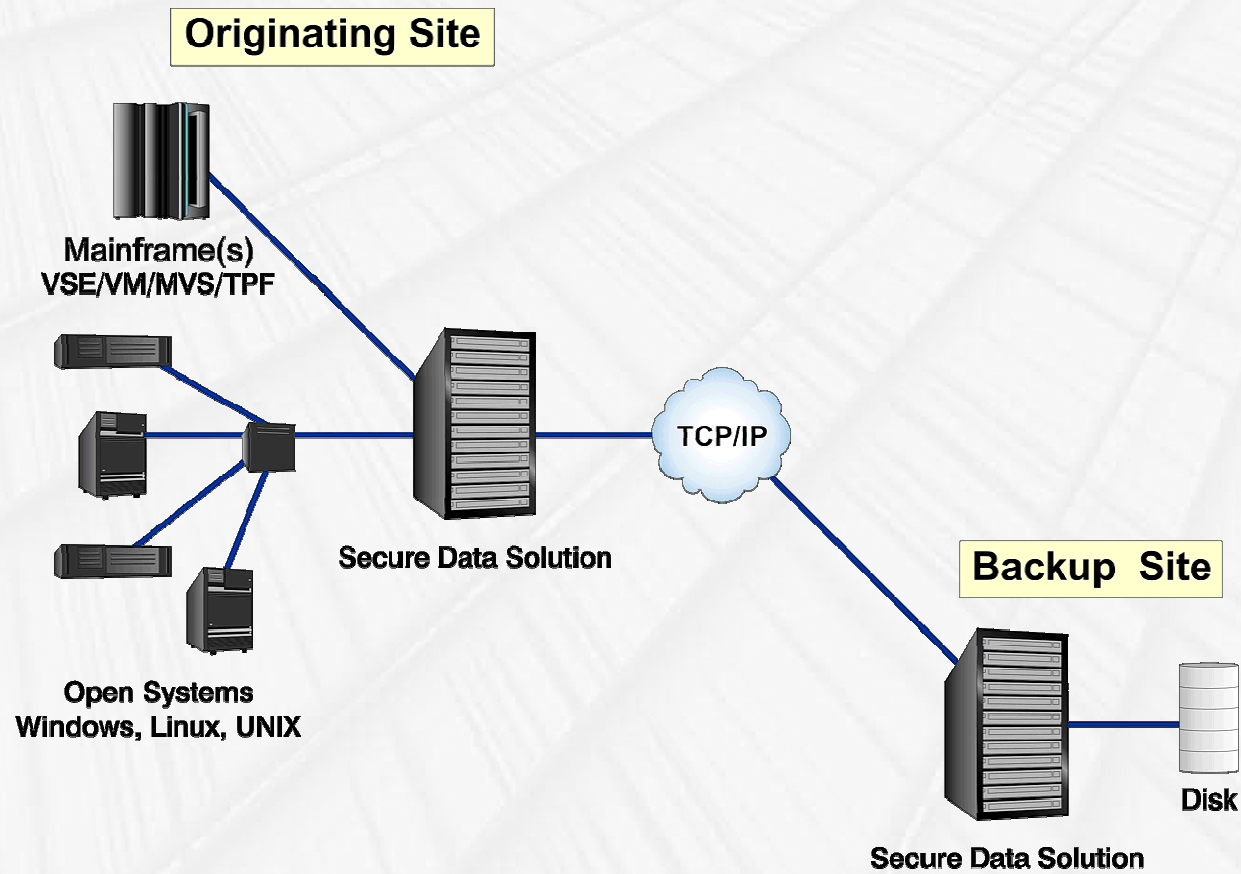
**Not just another Virtual Tape System.  
A Disaster Recovery system using Virtual Tape Libraries  
in a unique and patented process.**



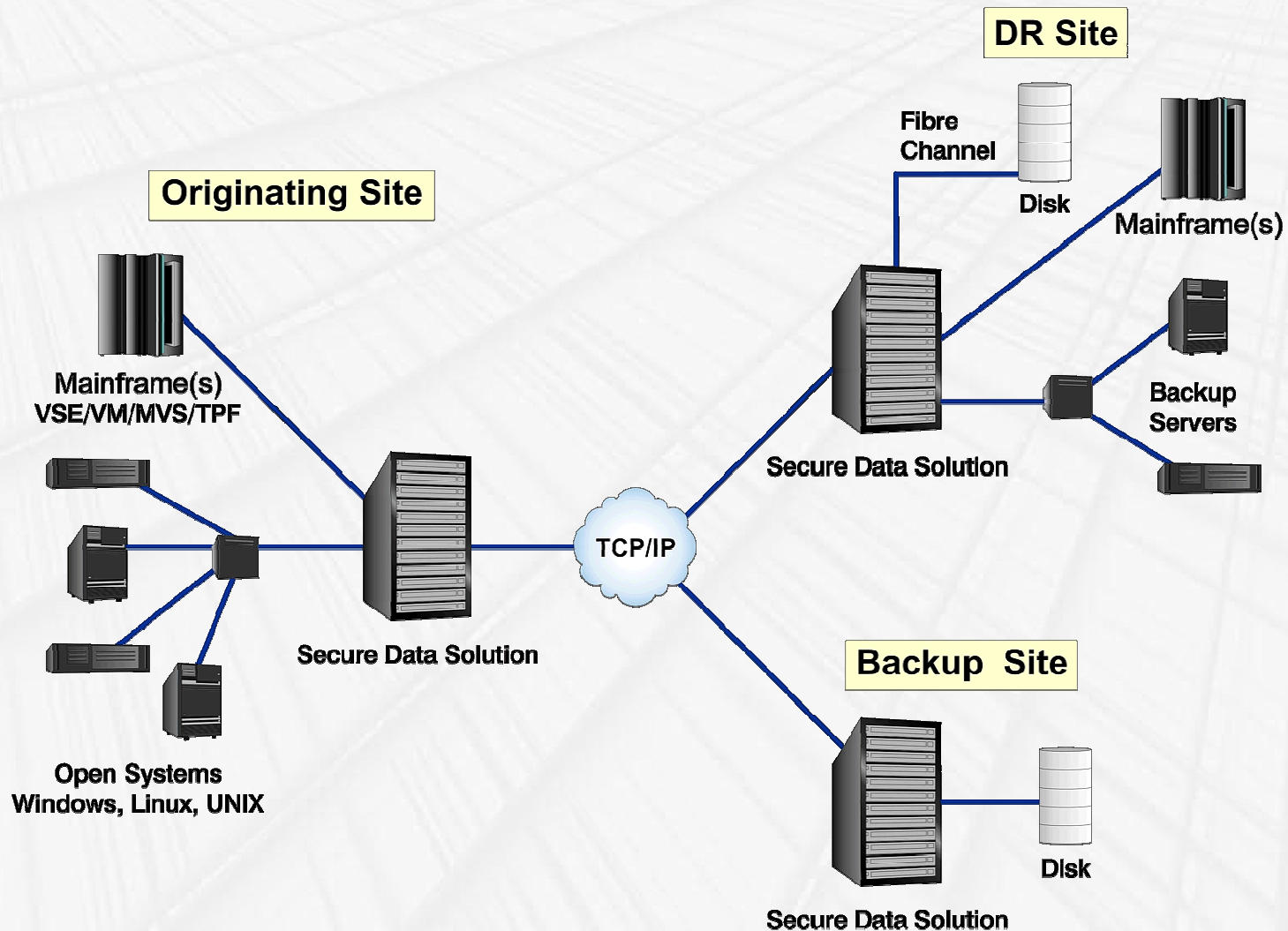
# Secure Data Solution<sup>®</sup>



# Secure Data Solution<sup>®</sup>



# Secure Data Solution<sup>®</sup>



## Integrated Off-Site Recovery Solution

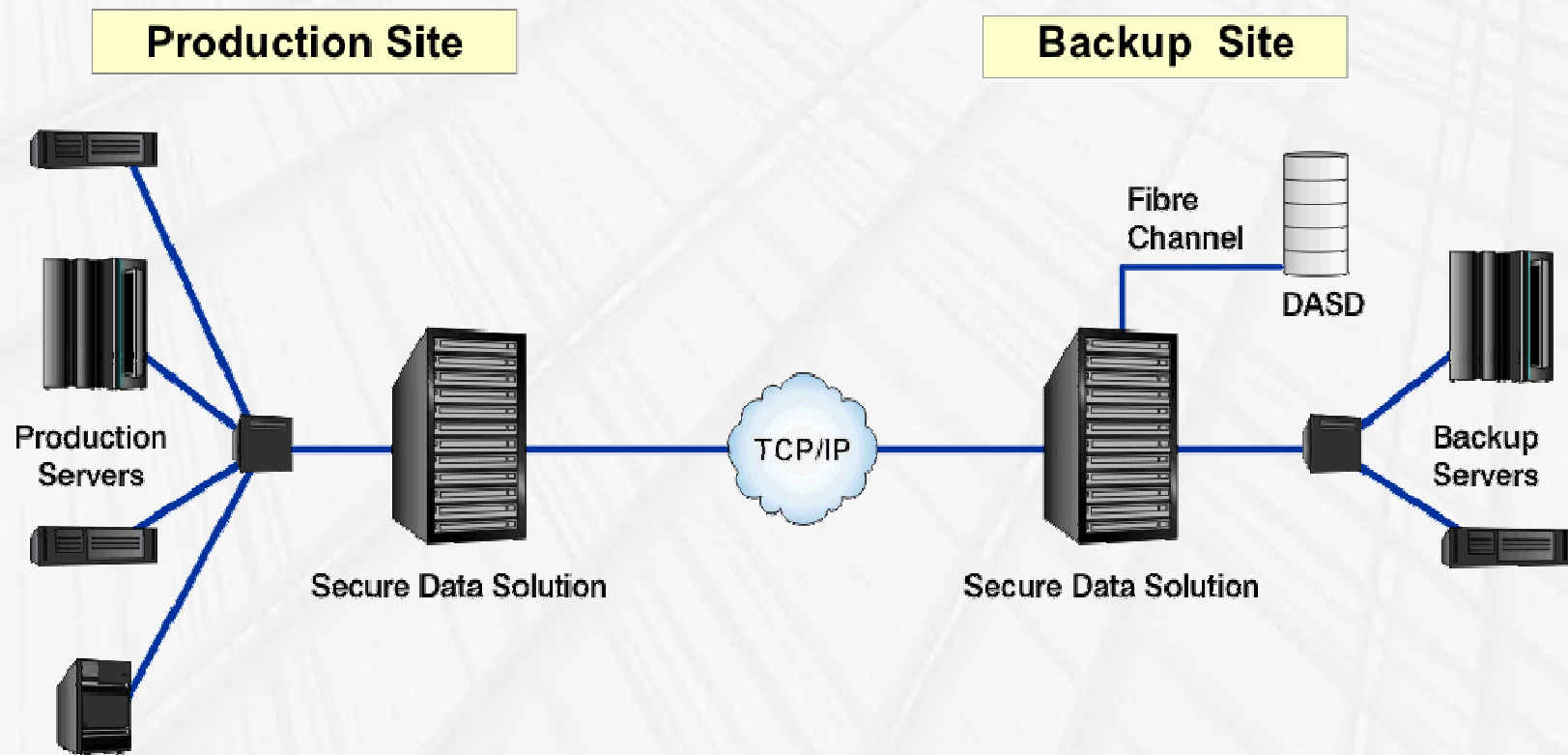


# Secure Data Solution<sup>®</sup>

## Six Tools Necessary to Successfully Perform a Remote System Recovery

1. Multi-location, Encrypted, Virtual Tape Emulation

2. Off-site Movement of Critical Data



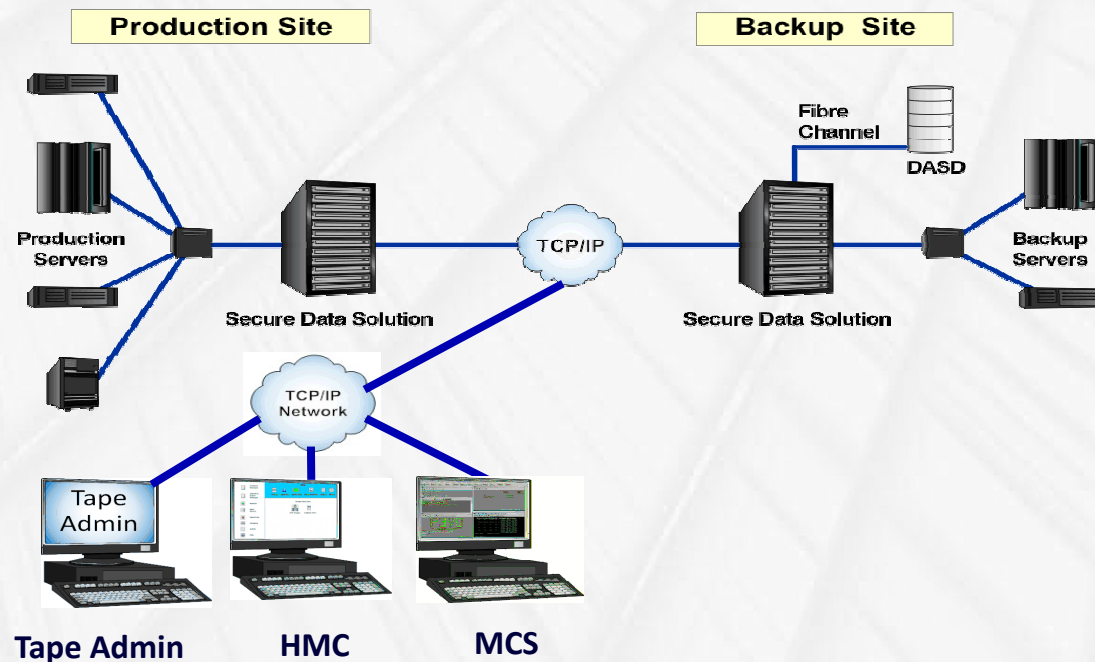
# Secure Data Solution<sup>®</sup>

## Six Tools Necessary to Successfully Perform a Remote System Recovery

3. Remote Tape Process Management

4. Remote Hardware & System Console Access

5. Integrated Automation



# Secure Data Solution<sup>®</sup>

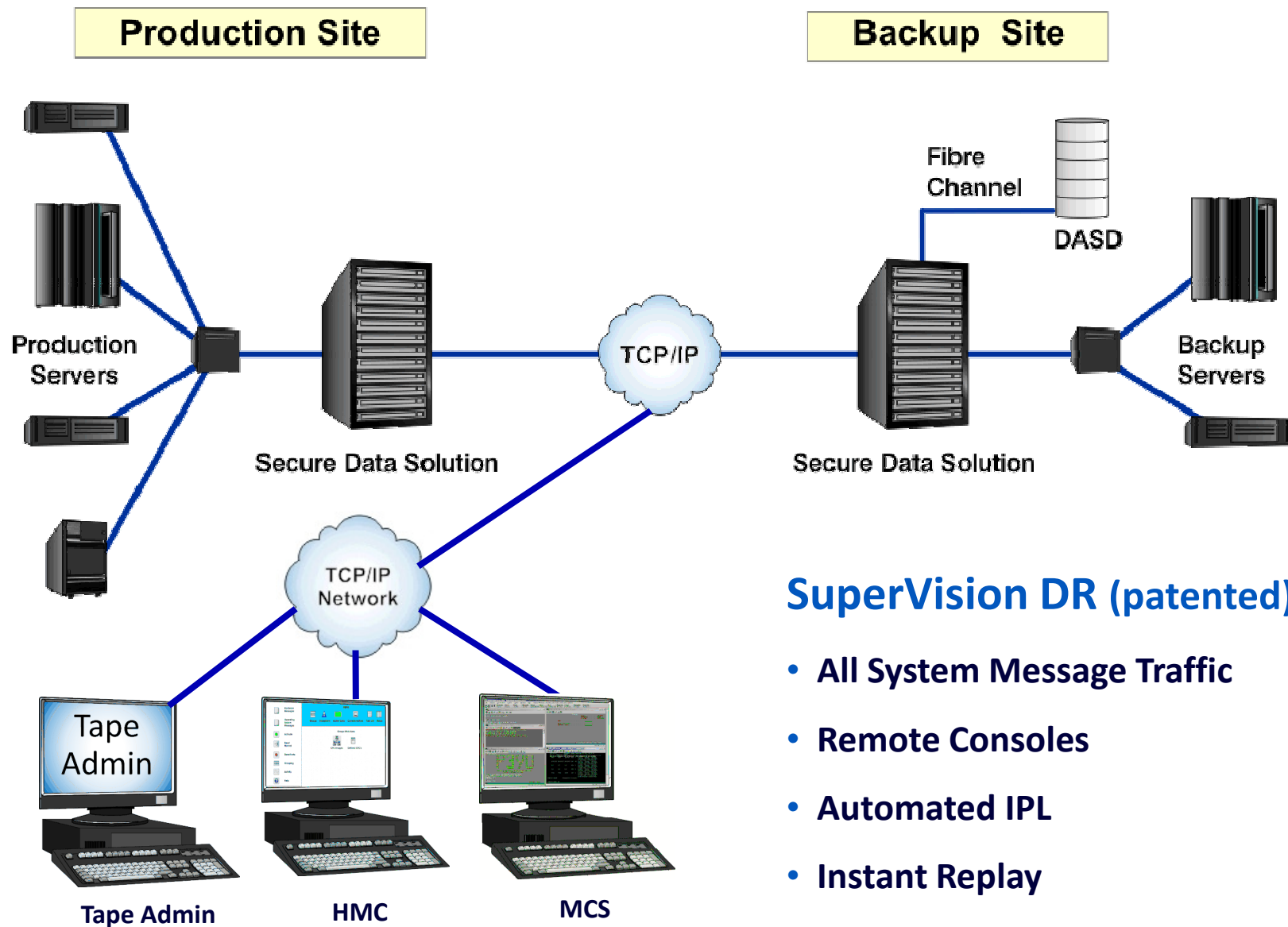
## Six Tools Necessary to Successfully Perform a Remote System Recovery

### 6. Patented Instant Replay

The screenshot displays the SuperVision Version 7.2 (Service Pack 34) interface. The main window shows the MVS Console for user 'Admin' (LU=mvsoper) connected via 9074 (66.210.43.100:1600). The console output lists various system components and their statuses, including OPEN SYSTEMS, INTERNAL SYSTEM DEVICE, and various bus and coupling devices. A secondary window titled 'MVS Console'(LU=mvsoper) via 9074 Instant Replay' is overlaid, showing a detailed view of the processor status and channel path status. The processor status section includes the date and time (12.24.06), the IEE174I display, and the processor ID (0) and CPU (0). The channel path status section shows a grid of '+' and '-' symbols indicating the status of various channels. The bottom of the interface shows a taskbar with several open windows, including 'Redhat Linu...', 'MVS Conso...', 'Audit Messa...', 'SuperVision...', and 'Alert Manag...'.



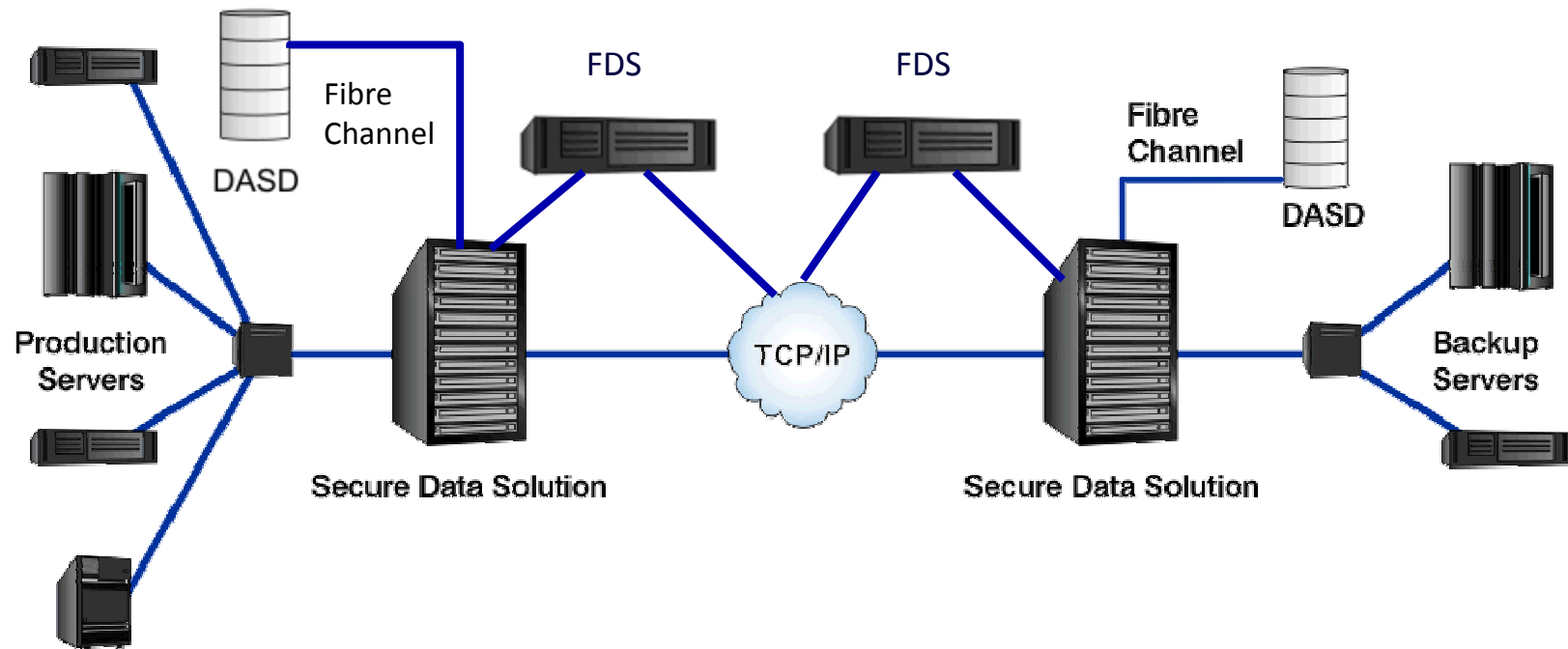
# Secure Data Solution<sup>®</sup>



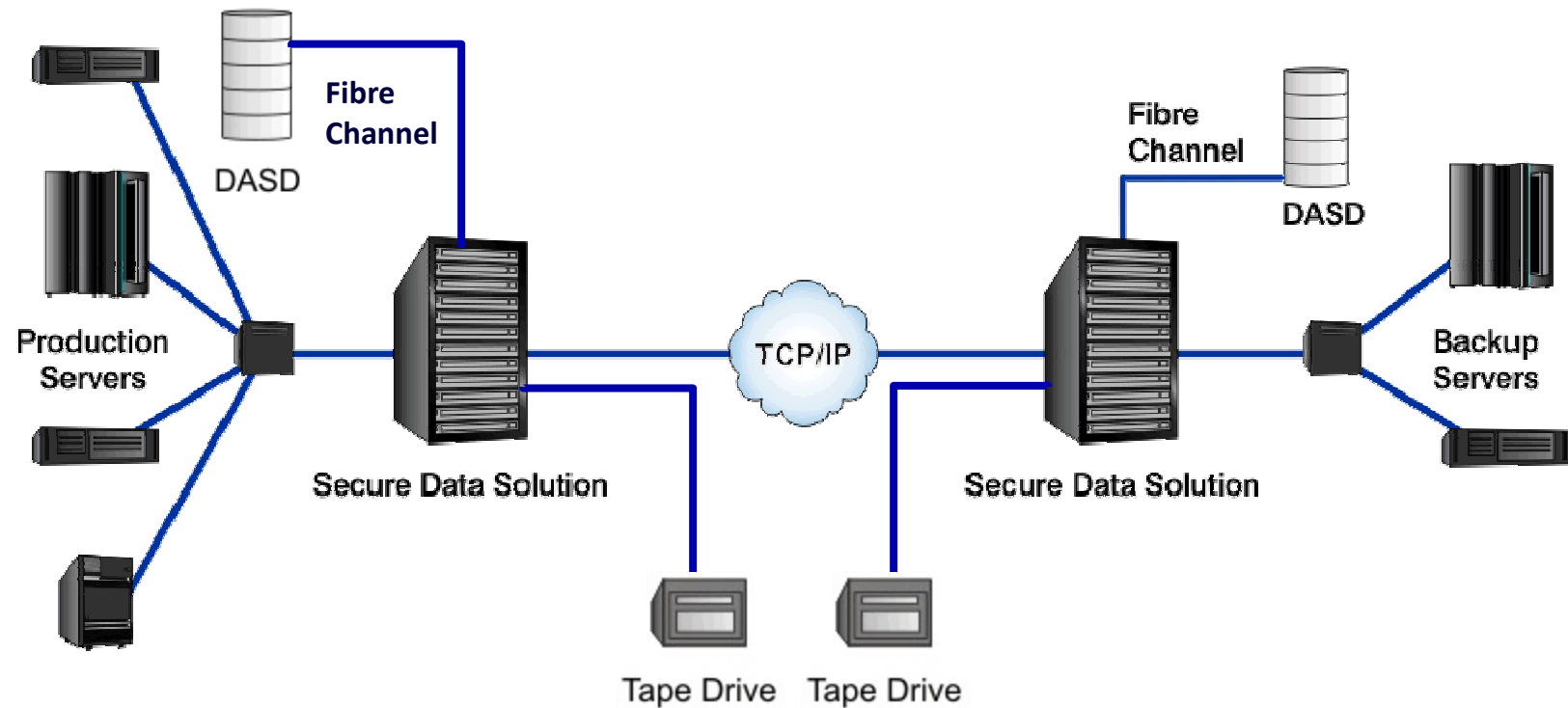
## SuperVision DR (patented)

- All System Message Traffic
- Remote Consoles
- Automated IPL
- Instant Replay

## Deduplication Option



## Storage on Disk or Tape



## Conclusion

A complete backup, offsite archival,  
and disaster recovery solution.



For more information contact:

## SecureAgent Software

2448 East 81<sup>st</sup> Street, Suite 2000

Tulsa OK 74137-4271

Voice: 918.971.1600

Fax: 918.971.1623

[www.SecureAgent.com](http://www.SecureAgent.com)

# **Secure Data Solution<sup>®</sup>**